

SSU Sizing Guide

USING THE RIGHT MEASURING TAPE

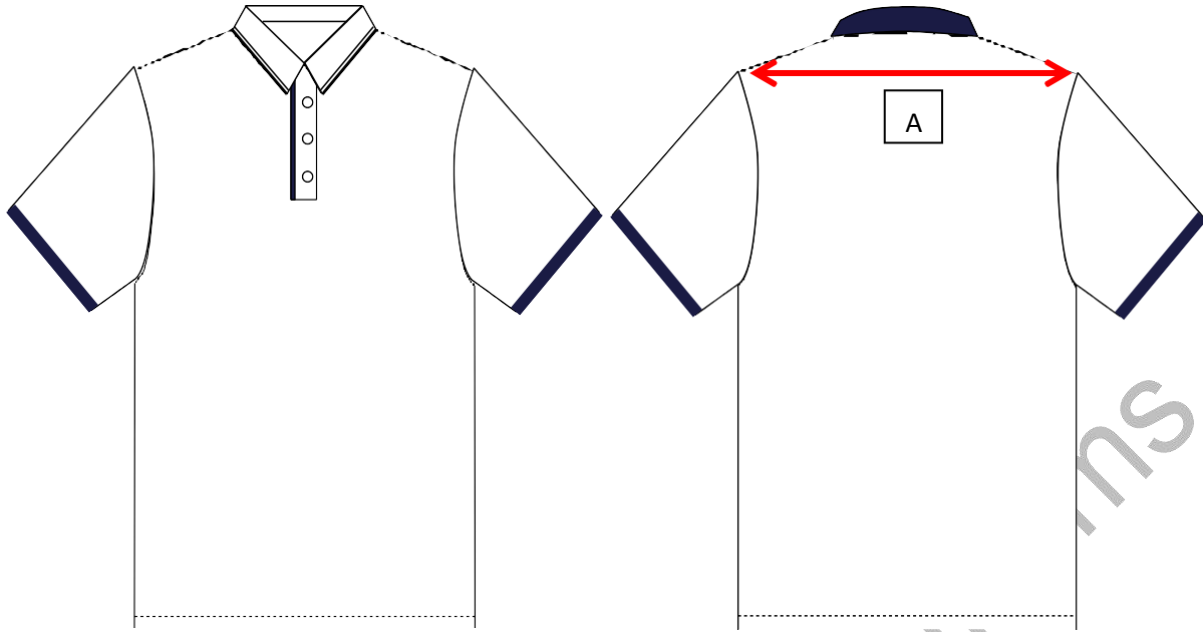
Dear Parents,

When measuring your child's uniform, it is important to use a measuring tape that adheres to the international standard for inches. The international standard defines an inch as exactly 2.54 centimetres. (1 inch = 2.54cm)

PLEASE **DO NOT USE** THE MEASURING TAPE THAT SHOWS CHINESE 寸(cùn) UNIT OF LENGTH (1 inch = ~ 3.33cm)



SSU Sizing Guide



Uniform Shirt (Short/Long Sleeve) - Measurement from **shoulder to shoulder** in inch.

Size		XS	S	M	L	XL	2XL	3XL	4XL	5XL
Shoulder Width	A	14"	15"	16"	17"	18"	19"	20"	21"	22"

Tip: **Measure from the tip of each end of the shoulder bone.** However, if your child is fleshly, it is best to add 1 inch extra to accommodate. If the child is extremely skinny, minus 1 inch from the final measurement to avoid the clothing looking too baggy for the child.

Polo (Boy) - Measurement from **shoulder to shoulder** in inch.

Size	XS	S	M	L	XL	2XL	3XL	4XL	5XL
Chest Circumference	32	34	36	38	40	42	44	46	48

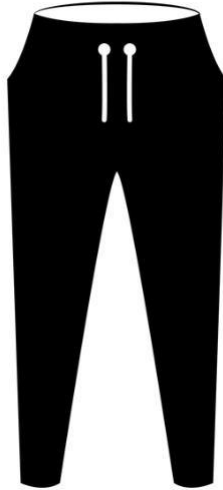
Tip: **Use $(A \times 2) + 4$ for the recommended Polo or T-shirt size.**

Long Sleeve T-shirt (Girl) - Measurement from **shoulder to shoulder** in inch.

Size	XS	S	M	L	XL	2XL	3XL	4XL	5XL
Chest Circumference	32	34	36	38	40	42	44	46	48
Shirt Length	34"	35"	36"	37"	38"	39"	40"	40.5"	41"

Tip: **Use $(A \times 2) + 4$ for the recommended Polo or T-shirt size.**

SSU Sizing Guide



PE Trackpants – measurements in inches

Size	XS	S	M	L	XL	2XL	3XL	4XL	5XL
Waist Relaxed	22	24	26	28	29	30	32	34	36
Waist Stretched	35	37	41	45	47	49	53	57	61
Hip	36	38	40	42	44	46	48	50	52
Length	37	37.5	38	38.5	39	39.5	40	40.5	41

Tip: **As a rule of thumb, follow the size of your child's Polo / T-shirt.** If your child is fleshly at the butt, add 1 size up; For very skinny build, minus 1 size down.



Long Pants - Measurement of **waist circumference** in inch.

Size	XS	S	M	L	XL	2XL	3XL	4XL	5XL
Waist Circumference B	24	26	28	30	32	34	36	38	40

Tip: **Measure the circumference of the waist where your child normally rests the waist band on the body.** Do not cheat by wrapping the measuring tape tightly against the body or by breathing out to contract the stomach. Belt loop, adjustable side buttons and half elastic band bottom allows up to 2-inch adjustment. Thus, a size 30 bottom, with a waist circumference of 28 inch will be able to support without dropping off.

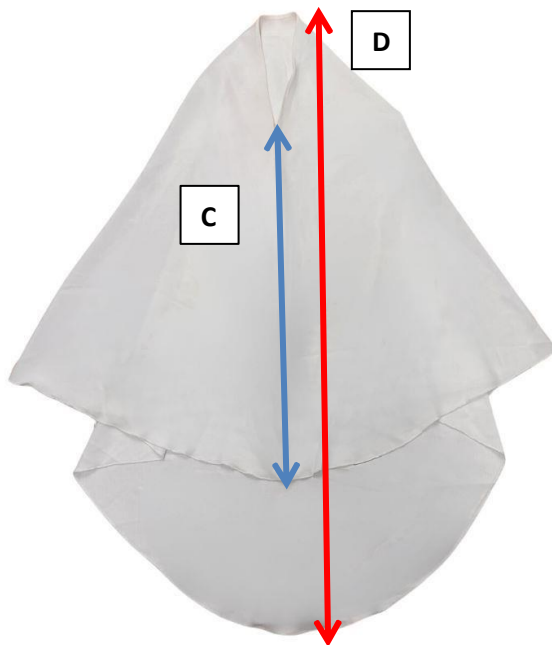
SSU Sizing Guide



Long Dress - Measurement from **shoulder to shoulder** in inch.

Size		S	M	L	XL	2XL	3XL	4XL	5XL
Shoulder Width	A	15	16	17	18	19	20	21	22

Tip: **Measure from the tip of each end of the shoulder bone.** However, if your child is fleshly, it is best to add 1 inch extra to accommodate. If the child is extremely skinny, minus 1 inch from the final measurement to avoid the clothing looking too baggy for the child.



Head Scarf

Size		S	M	L
Front Length	C	19"	21"	23"
Back Length	D	41"	43"	45"
Face Opening	E	24 cm	25.5 cm	27 cm

SSU Sizing Guide



Hand Socks

Socks Size	Free Size
Length	8"

Socks / Shoes – Shoe measurement based on **Euro size**.

Socks Size	S					M				L			XL
	29	30	31	32	33	34	35	36	37	38	39	40	41 >

Special Size Uniforms

For sizes that are not listed in the product page, you may contact us to check if a measuring session is necessary for your child at 63522741. Prices varies for Special Size Uniforms; our Merchandising team will be happy to assist you accordingly.